



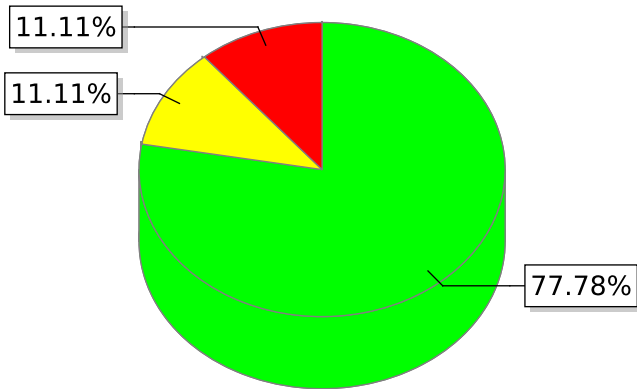
PLANT HEALTH MONITORING

PEST ANALYSIS

Crop: Corn
 Growing stage: 30 days

Field area: 27 Hectare
 Analysis name: Pest Stress

STRESS LEVEL TABLE



Stress level	%	Hectare
● Fine	77.78%	21
● Potential Pest Stress	11.11%	3
● Pest Stress	11.11%	3

Total area PEST STRESS:

6 ha = 22% field

Additional information: (or recommendation)



PLANT HEALTH MONITORING

PEST ANALYSIS

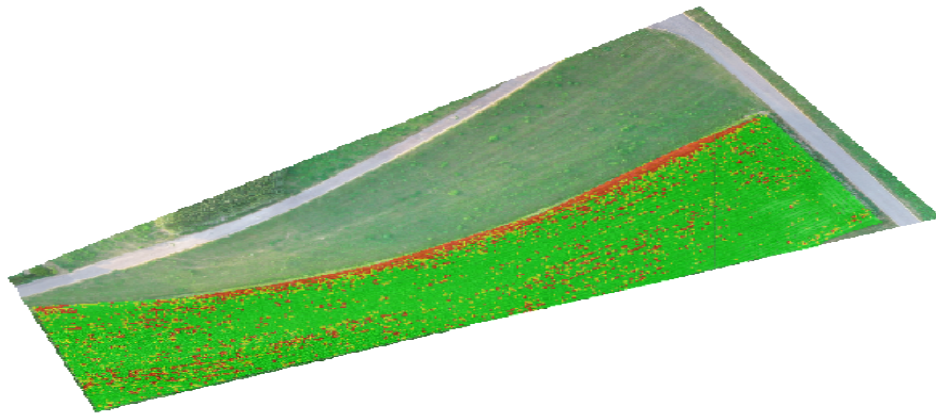
Crop: Corn

Growing stage: 30 days

Field area: **27 Hectare**

Analysis name: Pest Stress

Result Map



Location Map

